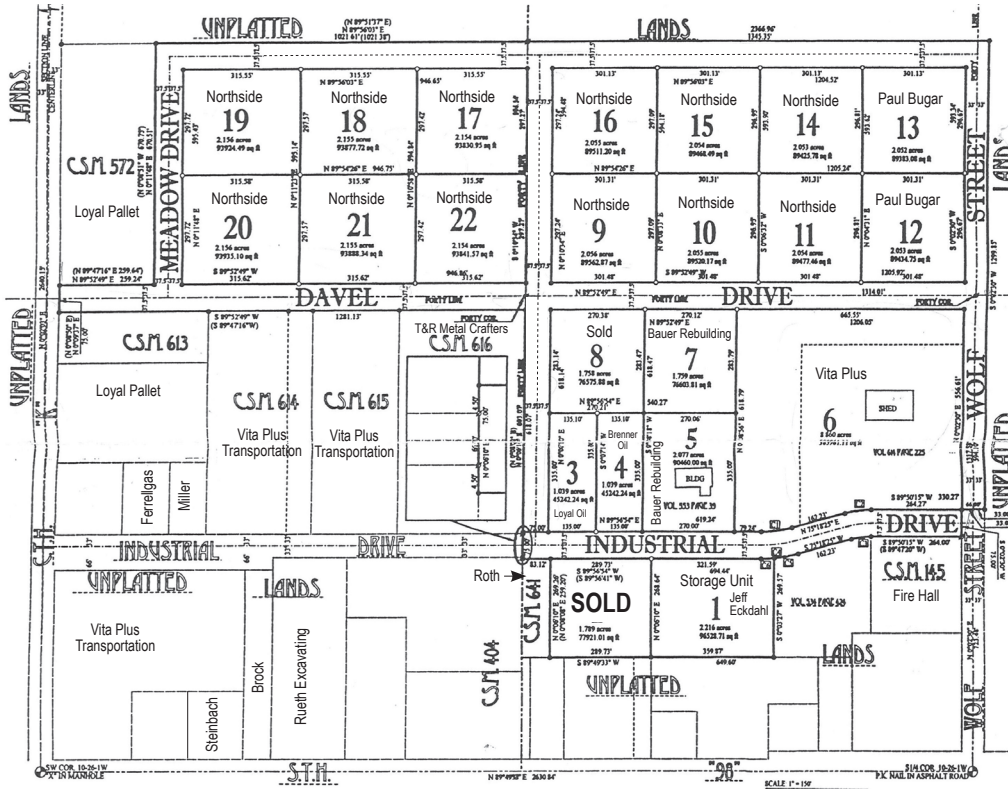


Loyal, WI -- Industrial Park



AVAILABLE SPACE



SITE DESCRIPTION

The Loyal Industrial Park is a highly visible park, ideally located in the center of Clark County on State Highway 98. It is close to rail, air, and high-way transportation sources. Medical facilities are available in the City of Loyal with Memorial Medical Center which also has a hospital within 15 minutes. Marshfield Medical Center and its related medical facilities are also within 15 minutes from Loyal.

Site Specifications

SITE INFORMATION

Available Acres 3.24
Zoning General Industrial

TRANSPORTATION

Nearest major highway WI State Hwy 29/
State Hwy 98
Distance to nearest highway 15 miles / Adjacent
Lanes 4 / 2
Nearest comm. airport Mosinee / Eau Claire
Distance to airport 44 / 51 miles
Runways – over 1700' Within 15 minutes
Rail provider Canadian National
Rail siding Within 15 minutes

UTILITIES

Electricity supplier Xcel Energy
3-phase electric Yes
Gas supplier WE Energies
Municipal water Yes
Municipal sewer Yes
Stormwater Yes

TELECOMMUNICATIONS

Fiber optics Yes

MEDICAL

Medical Yes
- Marshfield Medical Center - Neillsville 16 mi
- Marshfield Medical Center 15 mi
- National Farm Medicine Center 15 mi
- Marshfield Clinic Research Institute 15 mi

INCENTIVES

Multiple Local, State, and Federal funding opportunities
Regional Business Fund
WI Financing & Tax
Credit Program
WHEDA/USDA/WBD
Focus on Energy
TIF
Labor training & others
WEDC

TERMS

Land sales based on company investment and job creation
Municipal ownership

CONTACT

Sheila M. Nyberg
Executive Director
Clark County Economic
Development Corporation
301 N. Main St.
P.O. Box 236
Loyal, WI 54446
Phone: 715-255-9151
Fax: 715-255-9153
sheila@clarkcountyedc.org
www.clarkcountywi.org
Mayor of Loyal
301 N. Main
P.O. Box 9
Loyal, WI 54446
Phone: (715) 255-8772
Fax: (715) 255-8733
pcenglebretson@gmail.com
www.loyalwi.com

Loyal,

the small friendly city with room to grow!



City of Loyal
 301 N. Main
 P.O. Box 9
 Loyal, WI 54446
 Phone: (715) 255-8772
 Fax: (715) 255-8733
 stoufar@loyalwi.com
 www.loyalwi.com



Loyal was so named because of the patriotic nature of the men of the pioneer town who went off to protect the Union during the Civil War in the 1860s. Loyal was established in 1870.

Logging and pioneer farming brought settlers to the area that is now well known for its productive land use and dairy heritage, and serves as a hub of a large agricultural area.

Loyal has three City parks. The West Side Community Park has two baseball fields, 5-hole golf course, volleyball court and a sheltered pavilion for family outings. The park is also home to a Veterans Memorial, honoring its war veterans. It was inspired by the 2001-2002 eighth grade class, and funded by the sale of engraved memorial bricks.

The City may be best known for its annual August Corn Fest. It features Spanky's 5 and 10k run/walk, free corn on the cob, and evening truck and tractor pull and a Sunday parade down Main Street. September also features a classic car show on the 2nd Sunday.

www.loyalwi.com

Travel Time to Loyal, WI

To and from Loyal	Miles
Eau Claire, WI	59
Wausau, WI	56
Minneapolis/St. Paul, MN	156
Madison, WI	161
Green Bay, WI	151
Milwaukee, WI	210
Chicago, IL	295

